

FLOOD CONTROL

Flood Control Project Upper Prairie/Silver/Moores Creek

The primary goal of the Upper Prairie/Silver/Moores Creek Flood Control Project is to provide flood protection for the 100-year storm to urban, residential and commercial properties in western and northern Grand Island. Additional benefits will also include: the removal of western and northern Grand Island from the FEMA floodplain, protection of crop land, roads and bridges from rising floodwaters and providing wetland enhancements. Success of this project is reliant on coordination with several government agencies including: USFWS (U.S. Fish and Wildlife Service), USACE, (U.S. Army Corps of Engineers), DNR (Department of Natural Resources), CPNRD (Central Platte NRD), Hall County and the City of Grand Island. An estimated 2,750 homes and businesses will benefit from this project when completed. Construction is estimated at \$16.2 million.



Phase 1 – Silver Creek Low Land Stormwater Detention Cells

The first phase of the project is the construction of 4 large floodwater detention cells along the Silver Creek channel with a total excavation of approximately 5 million cubic yards of dirt. Design of the detention cells also includes the lowering and regrading of Silver Creek for more than two miles. The detention cells have a combined capacity to detain runoff from a 100-year storm. Two 36-inch diameter reinforced concrete pipes are used as the outlet and will discharge stormwater from the cells at a rate equal to the 2-year storm.

A berm is being placed around the cells, approximately two feet above existing ground, to provide sufficient capacity to detain runoff from the 100-year storm with one foot of freeboard.



Contact



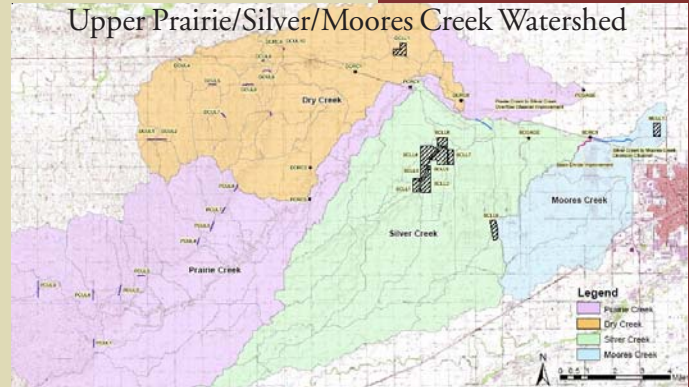
Lalit Jha, PE/CFM
Lincoln, NE 68508
p/402.435.3080
f/402.435.4110
ljha@jeo.com

FLOOD CONTROL

Phase 2 – Basin Divide and Silver/Moores Creek Diversion Channel

Phase 2 includes a diversion channel that will connect Silver Creek to Moores Creek and a levee that will prevent flood water from flowing from one basin to the adjacent basin.

Stormwater released from the detention cells, when combined with excess runoff from Prairie Creek, may cause flooding within the city of Grand Island. A levee will be designed according to FEMA and ACOE requirements to prevent such overflow. A diversion channel will also be constructed to divert water from Silver Creek to Moores Creek.



Phase 3 – Upland Dams and Prairie/Silver Creek Channel

The final phase of the project is the design and construction of a series of upland dams and an overflow channel from Prairie Creek to Silver Creek. The exact locations of the dam sites will be finalized in the design phase of this project. Several sites are available and will be evaluated after geological investigations have been completed. The channel will serve to convey excess flows from Prairie Creek to Silver Creek.

