

COZAD DITCH COMPANY

The Central Platte Natural Resources District (CPNRD) and Cozad Ditch Company partnered in March of 2012 to create a more efficient irrigation system. Completed in three phases and only two years, this massive project included:

- 27 miles of clearing and grubbing
- 21 miles of grading
- 13 new structures: included 4 farm crossings, 6 check structures, 1 underdrain structure, 1 siphon, and 1 county road wing wall replacement.
- River Return Structure
- Spring Creek Wasteway Structure: excavation of Spring Creek Channel (1,415 LF), 22 walkway modifications/extensions, and a SCADA automated monitoring system of the Rubicon Gates which includes 4 flume gates and 7 slip meters.

30-YEAR MANAGEMENT AGREEMENT CPNRD-Cozad Ditch Company

- Cozad Ditch Company will lease water appropriations to Central Platte NRD.
- CPNRD leases 50% interest in Cozad Ditch Company's real and personal property.
- CPNRD leases 50% interest in the water delivery systems in order to assist with continued operations to deliver surface water for irrigation and groundwater recharge as well as to provide enhanced stream flows to the Platte River for State and local purposes, including but not limited to, the Platte River Recovery Implementation Plan, the Platte River Basin-wide Integrated Management Plan, and the CPNRD Platte River Integrated Management Plan, including the return to fully appropriated for the areas in Dawson County and western Buffalo County designated as over-appropriated.
- Cozad Ditch Company and CPNRD use the irrigation canal and laterals to augment ground water recharge and flows to the Platte River.

PROJECT COST \$6,596,860.08 Engineering Firm- Olsson Associates of Grand Island, NE.



(1925): Diversion Point. Canal has been in place and diverting water for 120 years.



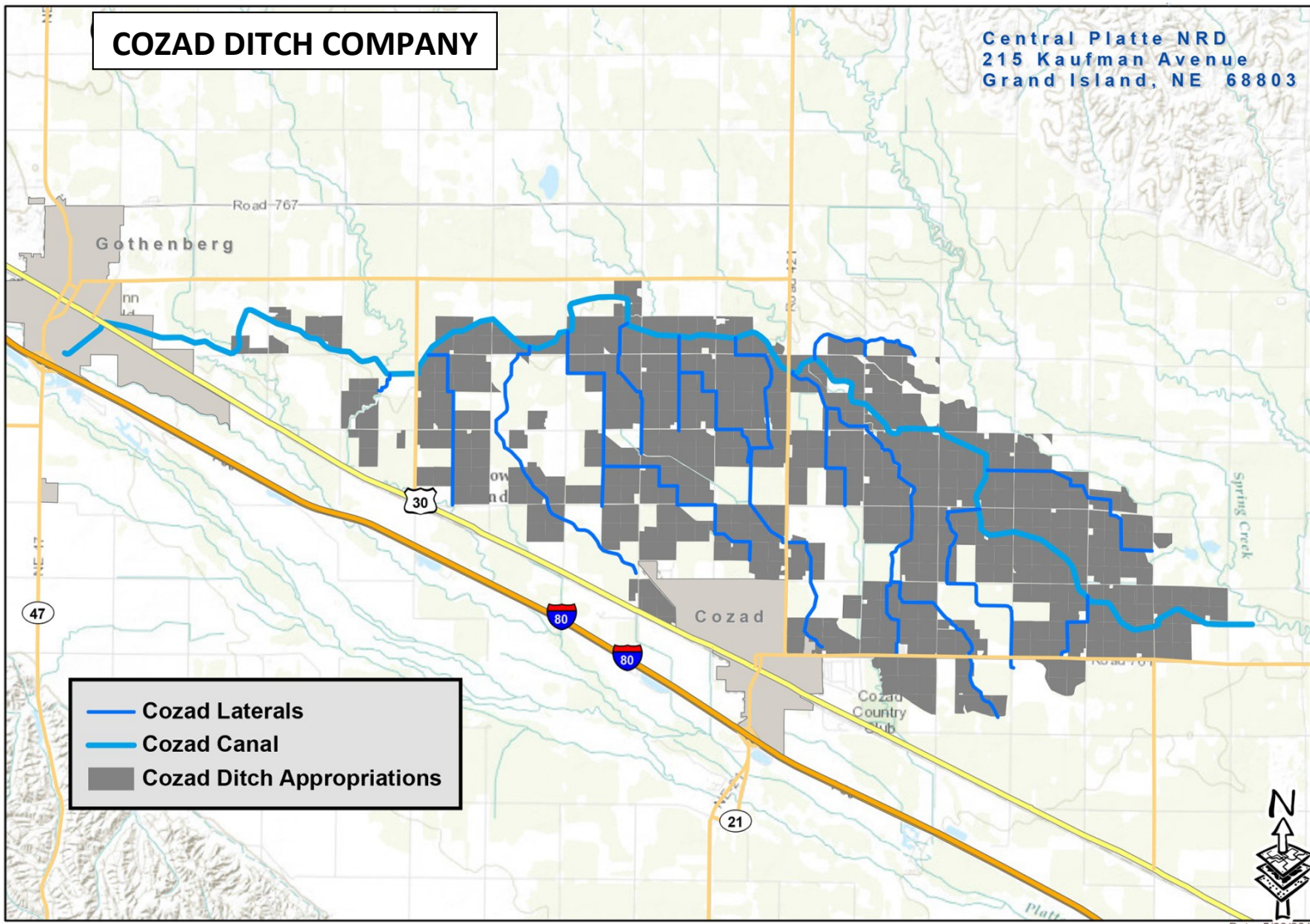
(2012): Channel overgrown with trees and channel in disrepair.



(2014): Channel at headworks holding water as designed.

COZAD DITCH COMPANY

Central Platte NRD
215 Kaufman Avenue
Grand Island, NE 68803



Water Rights:

This project has the potential to provide 7,000 to 18,000 AF of water savings annually; which will help the CPNRD get closer to a fully appropriated status.

The canal has been in place since its water right was approved in 1894; with water rights to irrigate over 25,000 acres of land in the area between Gothenburg and Lexington in Dawson County.

To date, this partnership has resulted in one diversion of excess flow in 2011 totaling 4,365 AF. The groundwater return for 2011 through 2014 is computed to be 418 AF back to the Platte River.



COZAD DITCH COMPANY



COZAD DITCH COMPANY

1/14/2013



1/14/2013



6/6/2013



5/29/2014



5/29/2014



6/17/2014

