

Southside Irrigation District

The Orchard Alfalfa Canal has been in place since its water right was approved in 1898; with water rights to irrigate 4,326 acres of land. The Central Platte NRD and Southside Irrigation Company signed a management-lease agreement in 2012. The canal company became an irrigation district in 2014; making the Southside Irrigation District a political subdivision.

Construction began in 2013 and included:

- replacement of 7 county road box culverts
- 51 acres of clearing and grubbing
- 60,200 LF of grading
- irrigation turnout structures
- removal of 3 farm crossings
- replacement of 13 canal structures
- replacement of diversion structure
- installation of slide gate with electric actuators on existing overflow structure
- rip rap overflow structure for high flows

30-YEAR MANAGEMENT AGREEMENT CPNRD-Southside Irrigation District

- Southside Irrigation District will lease water appropriations to Central Platte NRD.
- CPNRD leases 50% interest in Southside Irrigation District's real and personal property.
- CPNRD leases 50% interest in the water delivery systems in order to assist with continued operations to deliver surface water for irrigation and groundwater recharge as well as to provide enhanced stream flows to the Platte River for State and local purposes, including but not limited to, the Platte River Recovery Implementation Plan, Platte River Basin-wide Integrated Management Plan, and the CPNRD Platte River Integrated Management Plan, including the return to fully appropriated for the areas in Dawson County and western Buffalo County designated as over-appropriated.
- Southside Irrigation District and CPNRD use the irrigation canal and laterals to augment ground water recharge and flows to the Platte River.

PROJECT COST \$4,691,588.72 Engineering Firm- Olsson Associates of Grand Island, NE.



(Spring 2013): Pre-construction photo of the headworks shows over-growth of trees along the canal.



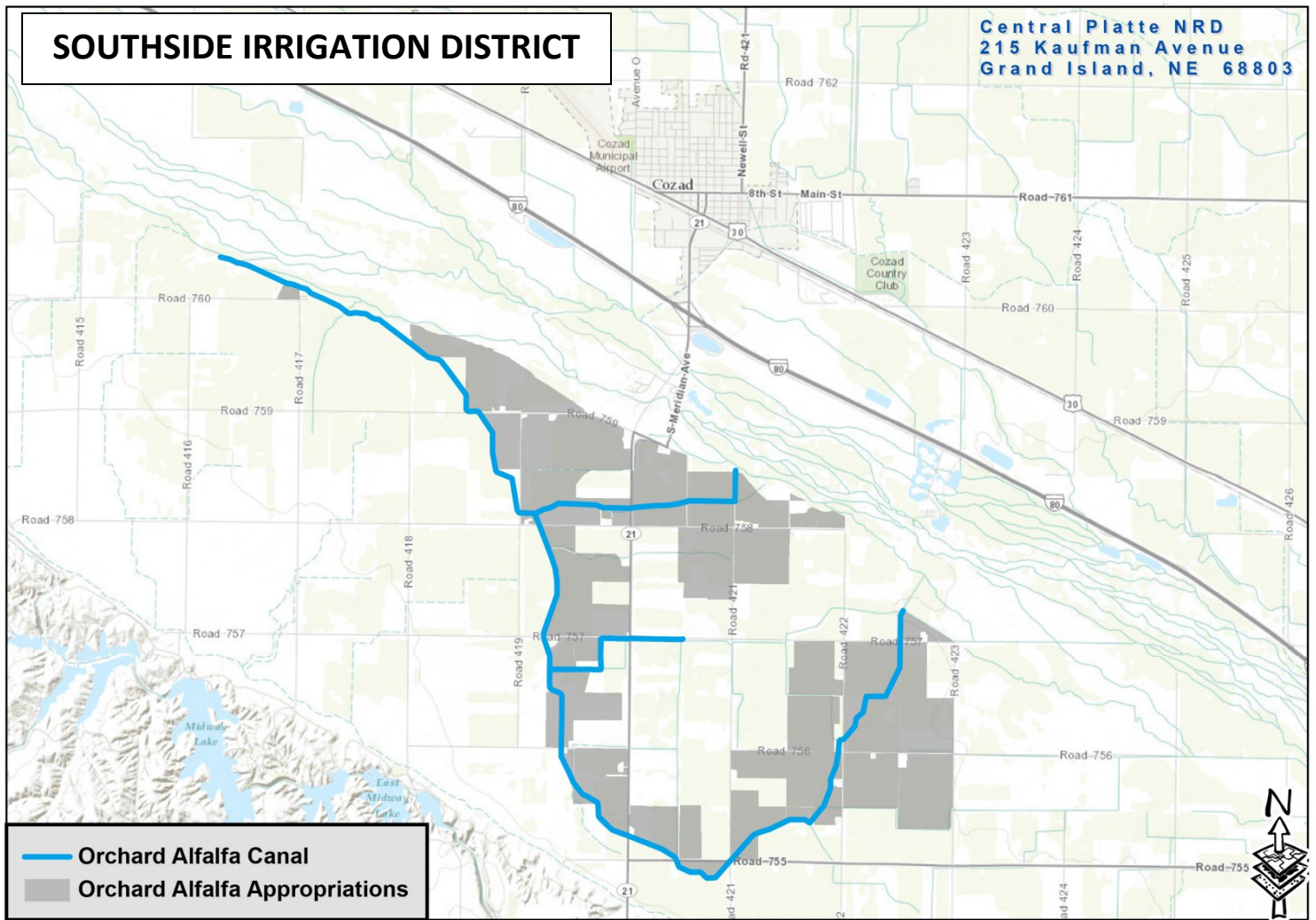
(Fall 2013): Large cranes and crews were common during construction at the headworks.



(Spring 2014): Overflow structure during inspection by Olsson Associates.

SOUTHSIDE IRRIGATION DISTRICT

Central Platte NRD
215 Kaufman Avenue
Grand Island, NE 68803



Date: 5/30/2014

Water Rights:

This project has the potential to provide 2,500 to 9,900 AF of water savings annually; which will help the CPNRD get closer to a fully appropriated status.

The canal has been in place since its water right was approved in 1898; with water rights to irrigate over 4,326 acres of land.

To date, this partnership has resulted in two diversions of excess flow in 2011 and 2012 totaling 3,351 AF. The groundwater return for 2011 through 2014 is computed to be 1,817 AF back to the Platte River.



The Nebraska
Environmental Trust

preserving NATURAL NEBRASKA™ for future generations

Nebraska
Department of Natural Resources



Central Platte
Natural Resources District

SOUTHSIDE IRRIGATION DISTRICT

9/20/2013



9/20/2013



12/4/2013



12/4/2013



12/4/2013



5/29/2014



SOUTHSIDE IRRIGATION DISTRICT

